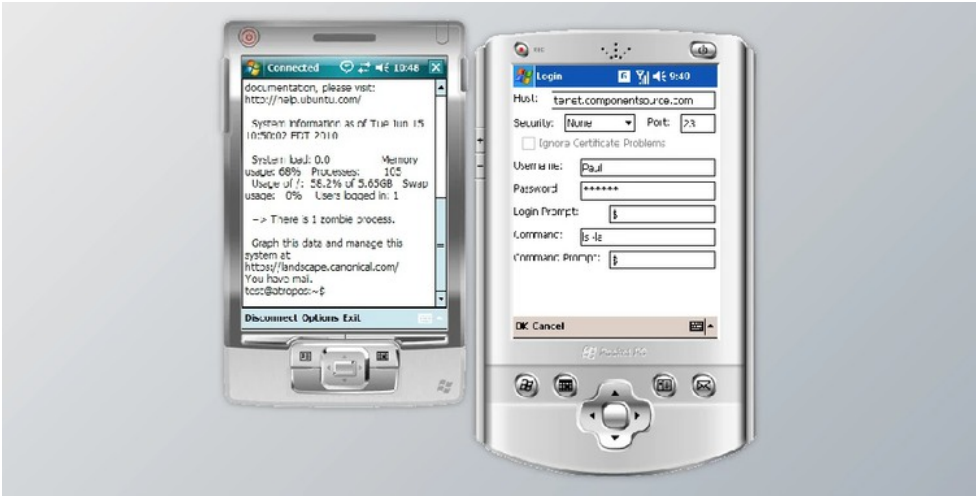


Dart PowerTCP Telnet for .NET CF v4.2.1.10 + Keygen

2024-12-18 23:03:15 [label](#) [我要反馈](#) [下载页面](#)



PowerTCP Telnet for .NET CF makes use of the .NET 2.0 redesign, delivering the most modern Internet Communications components available for handheld devices.

PowerTCP Telnet for .NET CF is a high-end Internet communication component for smartphones and handheld devices. It supports asynchronous communication and enhanced use of generics IPv6 and X509 certificates support. PowerTCP Telnet for .NET CF is simple to use with auto-login, and option negotiation capabilities make it easier to code. It supports multi-threading for interactive user applications as well as an event log for debugging session recording. PowerTCP Telnet for .NET CF is highly flexible and includes explicitly, and implicit SSL security, and characters from international sets are also supported. It is compatible with HTTP, SOCKS4, and SOCKS5 proxy protocols. It also includes Rexec and Rsh components, along with Telnet.

Dart PowerTCP Telnet for .NET CF Great Features:

- Login function automatically transmits username and password.
- Manual and automated option negotiation options to give you the maximum flexibility
- Inexpensive and explicit SSL security options
- Blocking reads are waiting for delimiters that are defined specially made for scripting applications.
- Start method for easy implementation of multi-threaded software, such as cross-threading marshaling support
- PTY property is used to connect a TextBox with the Telnet component to provide a pre-made interface for interactive online communications
- Logging event to make it easy to debug and session log
- Support for proxy servers
- It is compatible with Visual Studio 2005, 2008, 2010, and 2005.
- It supports C#, VB.NET, and other .NET developed environments that are compliant with the .NET Framework.

Rlogin .NET Component for CF Utilize Rlogin .NET component to effortlessly connect to a remote host using Rlogin.

- Login function automatically transmits username and password. The features include:
- SSL security options
- Blocking reads are waiting for delimiters that are explicitly defined made for scripting applications.
- Start method to implement multi-threaded software, such as cross-threading marshaling support quickly.
- PTY property connects a TextBox in the Telnet component, providing a ready-made interface for online communication that is interactive.
- Logging event for simple debugging and session log
- Support for proxy servers
- Integration With Visual Studio 2005, 2008 and 2010
- It supports C#, VB.NET, and other .NET compatible development environments

Rexec .NET Component CF -- Utilize Rexec, the Rexec component, to perform a command using a Smart Device application to a remote host. The features include:

- Execute function which executes the specified command on the remote host
- SSL security options
- Start method for easy implementation of multi-threaded software, such as cross-threading marshaling support
- Logging event to make it easy to debug and session recording
- Support for proxy servers
- Integration into Visual Studio 2005, 2008 and 2010
- The program supports C#, VB.NET, and other .NET compatible development environments



去下载

标签

- Other Components .Net

Rsh .NET Component for CF Utilize the Rsh component to run shell commands from an Android Device to the remote host. Its features include:

- Execute function that executes the specific order on the remote host
- SSL security options
- Start method to implement multi-threaded software, such as cross-threading marshaling support quickly.
- Logging event for simple debugging and session recording
- Support for proxy servers
- Integration into Visual Studio 2005, 2008 and 2010
- It supports C#, VB.NET, and others. NET-developed environments that are compliant with the.NET Framework.



产品数量
已有 42647个



付费会员
已有 1676位



价值评估
商业价值约 ￥6635.87万元



下载数量
已下载 222908次