



Wolfram System Modeler v14.3.0 Multilingual for Win & Linux & macOS + keygen

2025-08-08 10:20:42

label 我要反馈

下载页面

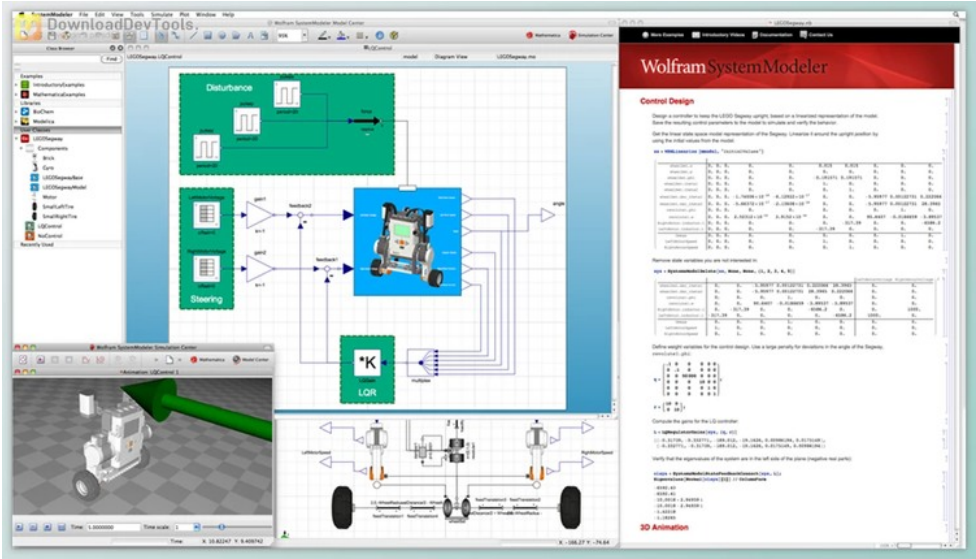


去下载

标签

Tools

Applications



Wolfram System Modeler is a sophisticated software platform designed for simulating complex multidimensional physical systems, offering an intuitive drag-and-drop interface for effortless model creation. Setting itself apart from other systems, System Modeler employs numerical and symbolic calculations, ensuring highly accurate simulations with exceptional precision. Its extensive library collection spans diverse technical areas, facilitating multi-physical and cyber-physical simulations.

With an emphasis on user-friendly modeling, enables the construction of industrial-strength, multidomain models through its intuitive interface and expandable libraries. The integration of the Wolfram Language enhances the environment, providing a comprehensive toolset for efficiently analyzing, understanding, and refining system designs. Notably, the software supports multidomain modeling, allowing users to simulate real-world systems spanning various physical domains.

Wolfram System Modeler's standout features include immediate exploration, granting users easy access to all values from every component in their models with a single click. Additionally, the software supports unlimited analysis, empowering users to conduct symbolic and numerical computations and leveraging the full capabilities of the Wolfram Language. Furthermore, its support for hardware and software connectivity allows seamless integration with real-world devices, offering a comprehensive environment for simulations, from modeling changing refrigerator temperatures to controlling Arduino robot arms. In comparison with competitors, System Modeler stands out for its ease of use, multidomain modeling capabilities, immediate exploration, unlimited analysis potential, and robust hardware and software connectivity features.

Key Features of Wolfram System Modeler :

1. Intuitive drag-and-drop interface for effortless model creation
2. Utilizes both numerical and symbolic calculations for highly accurate simulations
3. Extensive library collection covering diverse technical areas for multi-physical and cyber-physical simulations
4. Construction of industrial-strength, multidomain models with expandable libraries
5. Integration of the Wolfram Language for comprehensive system design analysis
6. Support for multidomain modeling, accommodating systems spanning various physical domains

- 7. Immediate exploration, providing easy access to all values with a single click
- 8. Unlimited analysis capabilities for both symbolic and numerical computations
- 9. Robust hardware and software connectivity for seamless integration with real-world devices
- 10. Versatile application, from modeling changing temperatures to controlling Arduino robot arms
- 11. Competitive features include ease of use, multidomain modeling, immediate exploration, unlimited analysis
- 12. potential, and strong hardware and software connectivity.

资源列表

- download Wolfram Mathematica v14.3.0 Multilingual for Win + Keygen
- download Wolfram System Modeler v13.2.0 Multilingual for Win
- download Wolfram System Modeler v14.3.0 Multilingual for Win + keygen



产品数量
已有 42647个



付费会员
已有 1676位



价值评估
商业价值约 ¥6635.87万元



下载数量
已下载 222908次