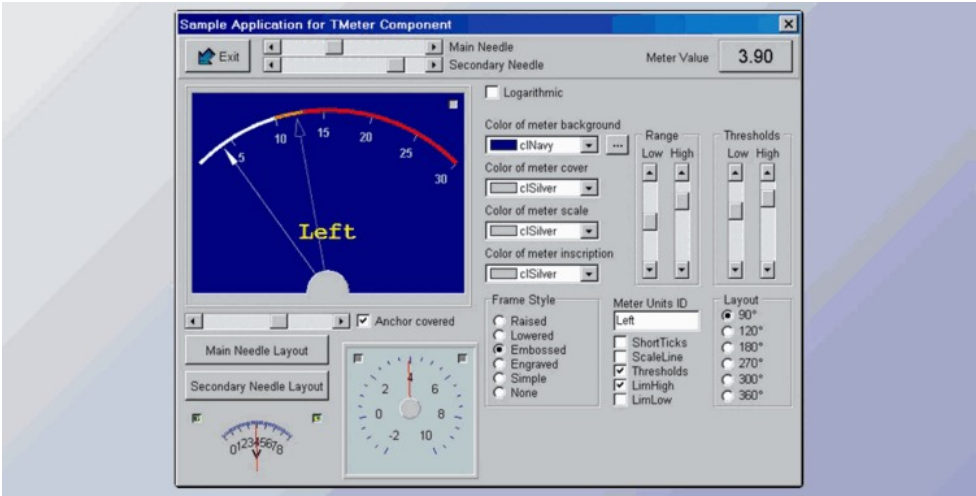




Lohninger SDL Base & Math v10.7 for D6-D11 Alexandria Full Source

2024-12-18 23:02:45 label 我要反馈 下载页面



The SDL or better known as the simple direct media layer is a software platform for the development Library which is designed mainly to provide a Hardware abstraction layer where are all the computer hardware components that are multimedia in nature. Software users and developers can easily use it to write high-performance computer games as well as other applications that are capable of running on many operating systems such as Android, Linux, Mac OS, iOS last but not least windows. The Simple Direct Media layer is capable of managing videos, audio, input devices, networking, shared object loading, CD ROM, and even threads. For the process of graphics of 3D, it is capable of handling OpenGL, Vulkan, and even the metal context. There is a very common misconception that the simple Direct Media layer is a game engine but it is not true. The library which belonged to eat is internally written in C and it can be dependent on the target platform of the C++ and the Objective- C and can provide the application to the programming interface in the C along with other available languages. Simple Direct Media layer has the ability to be used primarily in the industries that are either large or small projects. There are about 700 games as well as 180 applications along with 120 demos that have been posted on the website and the library of it. The simple direct media layer is a wrapper that is around the system of operating and a specific function which the game needs to access and function. There's only one purpose for the simple direct media layer and it is that it provides a common framework for the process of accessing these functions for the systems that have multiple operating. It is capable of providing unique support for the pixel operations of 2D, file access, sound, as well as handling of the event timing and threading. It is sometimes used for complementing the OpenGL by the process of setting of graphical output to provide Mouse as well as keyboard input. In the case of syntax in the simple direct media layer, the operation is being done by the process of passing the parameters to functions or even subroutines. It holds special structures that are being used for the process of storing the specific information that is needed to handle the simple direct media layer.

The great attributes of the simple direct media layer are stated below:

**It has user-generated content:** it is a model and the service which is available to the sympathetic media layer site as well as the Tridion Docs. This feature is capable of giving the website visitors the power and ability to read as well as comment on the topics as well as the content on the website or even implementing documentation.

**Unified delivery platform feature:** It is known to be the shared capability between the Tridion sites of the SDL as well as the SDL Docs that permit the user to publish from a content management system into a system that is centralized and can deliver content.

**Experience optimization:** this feature permits the user to create as well as manage contents that are targeted in the simple direct media layer which is web-driven and is web sites.

**Profiling as well as personalization:** It is an older personalization feature which is permitting and granting the user and the developer the ability to show as well as selected content to select certain types of users or certain Target groups. This function is largely replaced by the optimization of experience but it can be used in older implementations as well that are relying on the interaction of the content library rather than the content interaction services that are available for all the users.

**Digital experience accelerator:** It is known to be a reference implementation for the simple direct media layer and it is including modules that are capable of supporting capabilities of product such as context engine and even the power and the ability to define families of devices and later create views that are specific for the device. Future versions are capable of bringing the sympathetic media layer together with the reference of the SDL Tridion and the Tridion Docs of the SDL.



去下载

标签

- Components
- Delphi
- VCL



产品数量

已有 42647个



付费会员

已有 1676位



价值评估

商业价值约 ¥6635.87万元



下载数量

已下载 222908次