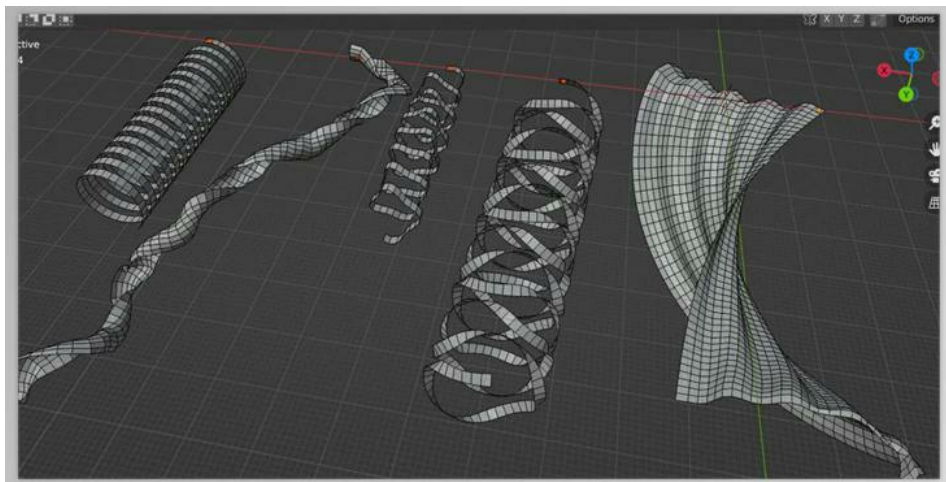


Gumroad - Edge Extrude (experimental addon) v1.0

2025-02-10 16:38:17 label 我要反馈 下载页面



Gumroad - Edge Extrude is a Blender add-on still in development that enables users to extrude selected edges in a straight, normal direction to the face. Edge extrusion can be performed in multiple passes; each pass can rotate, twist, and shift along some axis. This tool is helpful for surfaces like clothing, where continuous edges can be selected, and custom equations can be applied for rotation and twisting. Other features include custom extrusion size and rotation direction, number of repetitions for steps, and the ability to write dynamic equations in Python for transforms. This tool is meant to be fun, but other valuable purposes for general modelling are possible, especially for boundary edges.



去下载

标签

平面设计 Other

inve 产品数量 已有 42647个

gro 付费会员 已有 1676位

anal 价值评估 商业价值约 ¥6635.87万元

dow 下载数量 已下载 222908次