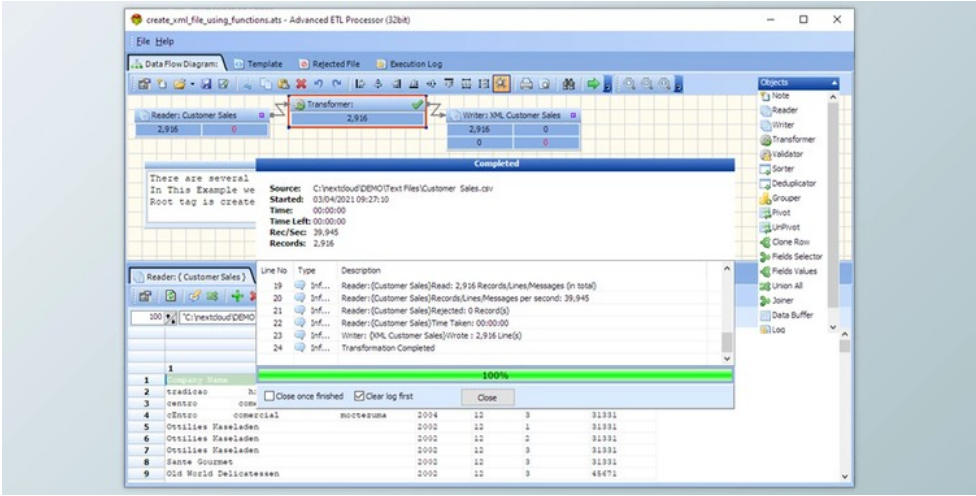




DB Software Laboratory Advanced ETL Processor v6.3.10.7 Enterprise for Win x86 & x64 + CRACK

2024-12-28 23:45:02 label 我要反馈 下载页面



Advanced ETL Processor is a powerful data integration tool with support for Incorporating Information with Almost any formats Such as Flat files, Excel, MS Access, DBF, FoxPro, ODBC, JDBC, OLE DB, MS SQL Server, Oracle, MySql, PostgreSQL, Firebird, Interbase, POP3 + SSL, IMAP4 + SSL, SMTP + SSL, SalesForce, Brightpearl, Windows Event Log, File System, XML, QVX and QVD Documents. Advanced ETL Processor is the perfect product for altering information in almost any enterprise. This can be accomplished without creating one line of code.

Design information transformations and company principles, add them into the bundles, document, document, FTP, email, and a lot more activities, and schedule them for execution regular basis.

Advanced ETL Processor was created by people with years of experience in executing **Data warehouses**. Every display is made to save time and boost efficiency. You can do it in 1 day longer with **Advanced ETL Processor** than in 2 weeks with SSIS. And it makes the life span of service private simple.

Unlike most other ETL products, **Advanced ETL Processor** avoids having a huge number of different straps, a lot of which are extremely subtle variants on similar elements. Rather, **Advanced ETL Processor** just one worldwide Info author and Info reader element, but everyone is highly configurable and contains each the parameters required to receive your information in and from virtually any data source. This strategy makes it possible for the end-user to style mapping and use it together with any file or database.

Sophisticated Data Integration made easy: The information integration process can often seem overwhelming due to the huge variety of large scale, complicated, and expensive enterprise integration software on the market. **Advanced ETL Processor** provides our clients with data integration capacities built to a simple graphical user interface. At any point, the user may press on the **"Magic Button"** and see the consequence of transformation without even loading the information.

Data integration in Advanced ETL Processor: **Advanced ETL Processor** permits you to easily connect source and target info structures utilizing the drag and drop functionality. A huge built-in library of innovative data processing filters and works can be obtained, and you can compose your personal transformations utilizing strong data conversion language in more complicated data integration situations.

Integrating Data from/into multiple information resources: **Advanced ETL Processor** lets you integrate information from multiple data sources or divide data from one data source to several. Numerous data sources could be given through support for wildcard characters (e.g., ? Or), and it may be put on the files/tables or sheets. Advanced ETL Processor also lets you utilize calculations in file names as parameters on your information integration projects. For instance, you can use it to load information from today's documents just.

Maps after use anywhere: **Advanced ETL Processor** presents a new notion called **"Universal Data Reader and Writer."**

Anything you're working with an Oracle, text document, or Access database, **Advanced ETL Processor** transforms info based on information definition irrespective of the inherent content. This usually means you could re-use your information integration mappings again and again as your company data changes.

Just right-click on the information reader or information author and select Properties to get the link settings dialog to modify your information source and, thus, your information integration project's information source or goal.

Data Manipulation: Data integration projects frequently demand a specific number of information manipulation - that the



去下载

标签

Database Tools

insertion of information processing purposes, filters, constants, or alternative operators creates the information intercepted from the target system.

Advanced ETL Processor offers intuitive features that allow you to execute complicated data validations and conversion. These include **191 filters and requirements**, **52 data conversion functions**, strong data transformation speech, and many more.

Works, filters, and constants can be retrieved from the Advanced ETL Processor through a drop-down toolbar. These works are grouped into String, Number, Date, Time analysis works, regular expressions, expressions, and data conversion purposes.

Chained Transformations: Chained transformations let you create complex mappings where the output of a single mapping becomes the input of another. A few intricate transformations are extremely tricky to comprehend; this strong feature permits you to design and debug complex transformations in one little step. Each chained part becomes a modular thing in an interdependent conversion chain, allowing conversions to be created on-the-fly.
Chained transformations could be made using various mapping elements attached to a couple of information author parts.

资源列表

download DB Software Laboratory Advanced ETL Processor v6.3.10.7 Enterprise for Win x86 & x64

inve 产品数量
已有 42647个

grou 付费会员
已有 1676位

anal 价值评估
商业价值约 ¥6635.87万元

dow 下载数量
已下载 222908次