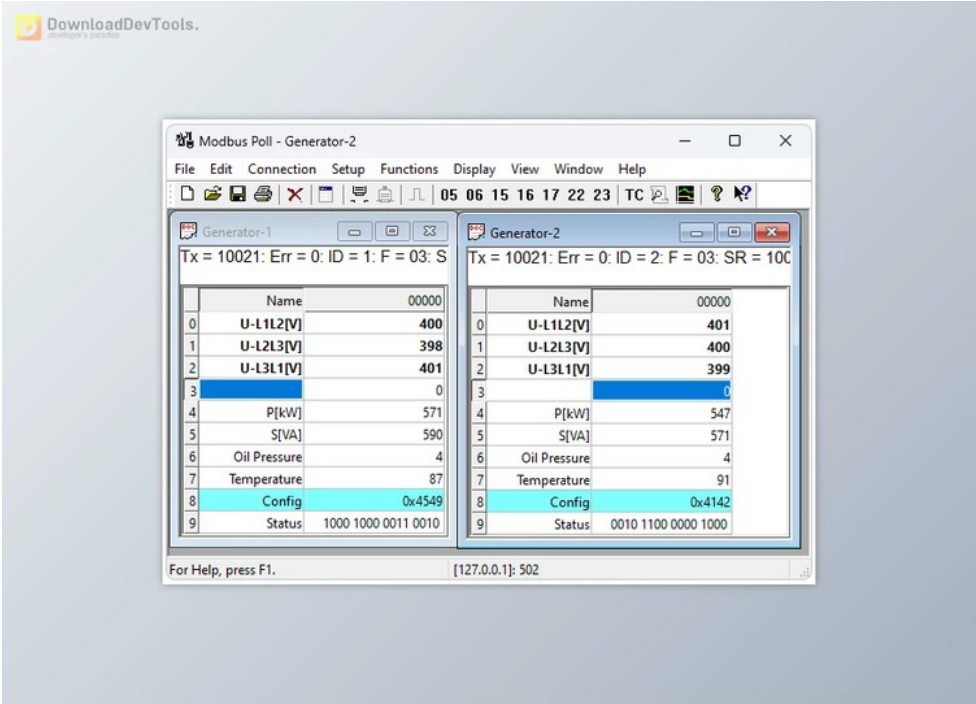
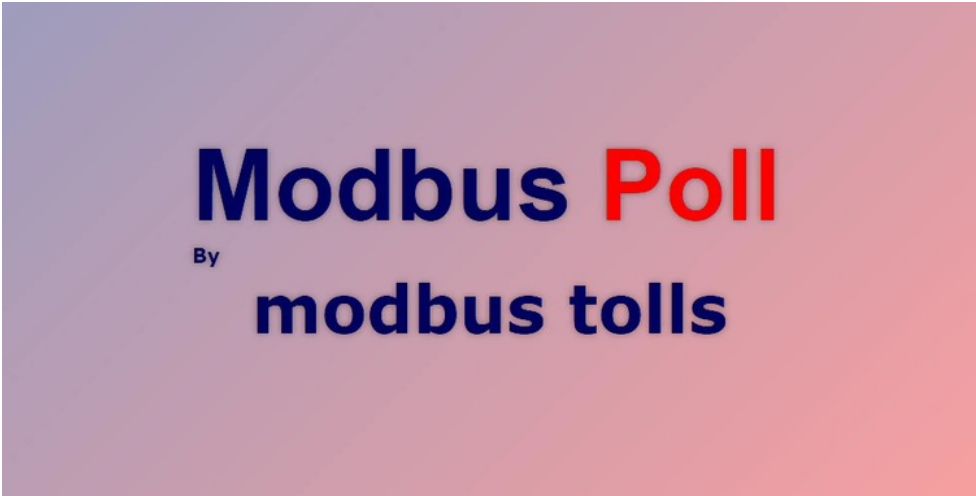




## Modbus Poll v10.9.4.2286 for Win x64 & x86 + License Key

2025-01-22 01:51:08    label 我要反馈    下载页面



**Modbus Poll** is a specialized simulator for Modbus master developers and those testing the Modbus protocol. A multiple document interface enables simultaneous monitoring of various Modbus slaves, supporting different protocol variants like RTU, ASCII, TCP/IP, and more. The tool simplifies parameter specification for monitoring, making it versatile for industrial applications.

For developers creating Modbus slave devices, **Modbus Poll** includes a "test center" for composing and sending custom test strings. OLE Automation support facilitates seamless interfacing with Excel, allowing users to interpret and display Modbus data. Technical features encompass read/write capabilities, a test center, print options, and real-time charting for effective monitoring, enhancing its utility for diverse Modbus communication needs.

In summary, is a versatile and user-friendly tool, streamlining Modbus protocol testing with support for multiple variants and advanced features for effective monitoring and troubleshooting.

### Key Features of Modbus Poll:

1. Simulates Modbus master to test and simulate the Modbus protocol
2. Multiple document interface for monitoring several Modbus slaves simultaneously
3. Configurable windows specifying Modbus slave ID, function, address, size, and poll rate
4. Read and write registers and coils from any window
5. Multiple data formats available, including float, double, and long, with word order swapping
6. "Test center" for composing and sending custom test strings for developers
7. OLE Automation support for interfacing with Excel and custom data interpretation
8. Supports Modbus protocol variants: RTU, ASCII, TCP/IP, RTU Over TCP/IP, ASCII Over TCP/IP, UDP/IP, RTU Over



去下载

标签

- Applications
- Tools

UDP/IP, ASCII Over UDP/IP

- 9. Real-time monitoring of serial data traffic
- 10. Data logging to text files and direct logging to Excel
- 11. Context-sensitive help for user guidance
- 12. 28 display formats for versatile data representation
- 13. Adjustable address base (0 or 1)
- 14. Scaling, broadcast (slave ID 0), and easy control of RS-485 converters with RTS toggle
- 15. ENRON/DANIEL Mode and 6-digit addresses for flexibility
- 16. Address scan and conditional color selection
- 17. Real-time charting for effective monitoring
- 18. Supports various Modbus functions, including read/write coils and registers, diagnostics, and device identification

资源列表

- download [Modbus Poll v10.8.1.2148](#)
- download [Modbus Poll v10.9.2.2236](#)
- download [Modbus Poll v10.9.4.2286 for Win x64](#)



产品数量  
已有 42647个



付费会员  
已有 1676位



价值评估  
商业价值约 ¥6635.87万元



下载数量  
已下载 222908次