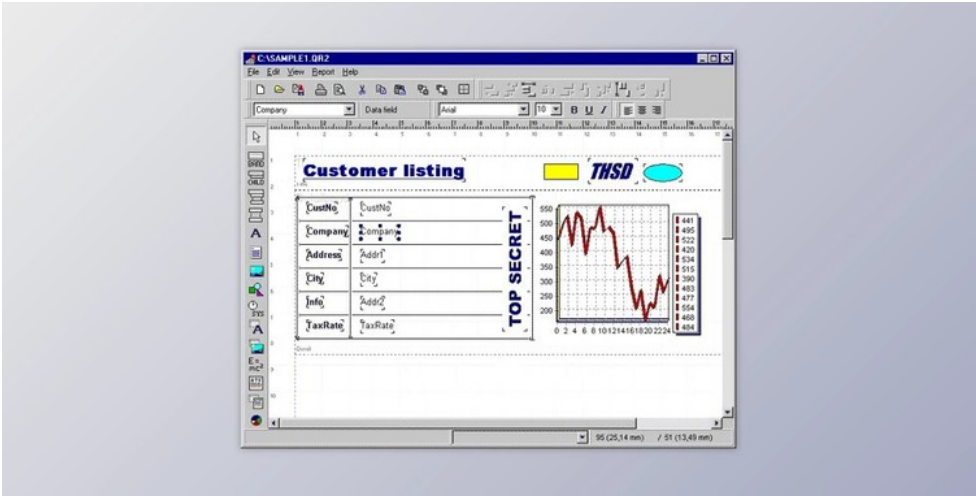




QRDesign v1.510.0 for QR6 & D10.3 Rio x86 & x64 Retail

2024-12-18 23:01:31 [label 我要反馈](#) [下载页面](#)



QRDesign is an end-user report designer that uses Quickreport.

QRDesign is a Quickreport-based transition designer. QRDesign allows users to create, edit and save reports. You can customize reports at runtime. QRDesign inherits the Quick Report features and adds more. This component includes all the features that you would expect of a professional report designer. Expert Report, Wizard Query, and End User Guide. Integrated Script Language. Mailing Label Support. This component is used by more than 2000 developers around the world and is available in 22 languages. A separate download will provide tools for translating QRDesign into other languages.

QRDesign allows users to create, modify, save, load, and delete their own reports. Reports can be customized at runtime.

QRDesign inherits all Quickreport functions and adds more. Every feature is accessible to the end-users of your application. QRDesign includes all the features that you'd expect from a professional report designer.

QRDesign: Great Features

- QuickReport: QuickReport is a Delphi-based report designer. Reports are integrated very closely with Delphi, C++Builder, and the IDE form designer.
- Data connectivity: Quickreport can use any component that descends from the VCL TDataset class. The abstract table component allows you to access any data that Delphi or C++Builder can see while still retaining all features.
- Output formats: Reports can be saved in document format, sent to a printer, or saved as HTML or PDF. HTML and PDF can be streamed to provide fileless output.
- Standard preview Thumbnails & text search
- TQRPrinterSettings' MemoryLimit property allows suppression of temporary files. If more memory is needed than the set, temporary files will be created. The HTML and PDF export filters do not create temporary files.
- The report printer settings and the QRPrinterSetup dialog box contain the print quality and Collate printer settings.
- Exporting is possible with the Composite Report Upgrade. TCompositeReport offers an ExportToFilter option for the HTML XML, XML and XL filter types
- Exports of frames and backgrounds have been made. Exports of background and band frames will be made.
- Export filters can combine reports; PDF, HTML, and XLS filters can take multiple reports.
- To send a saved report to a printer directly, you can use the Direct print for metafile option. When possible, printer settings take precedence over internal settings.
- An abstract dataset (Table), allows reports to be built around a specific set of fields. The data to these fields can be fed into an event called "when the dataset advances". Reports work the same way as a normal dataset.
- The XML/XSLT Export Filter outputs the document (not data) in a browser-viewable XML/XSLT file. An HTML stylesheet is provided for browser viewing.
- The background property and transparent bands are QRImage controls placed on the report (not on a specific band). Although the control is invisible, its bitmap will be painted onto each page before printing. Transparent may be used to prevent bands from the over-painting background.
- RichText and Memo routines calculate the band's expanded height. It is possible to stop bands from breaking across pages by writing code.
- RichText allows you to export to PDF, XML, and HTML as images
- The PDF filter allows TrueType fonts to embed, doesn't make temporary files, and integrates with the preview.
- The HTML (Web), the filter produces smaller files. It has properties to correct image linking problems and improve page-to-page connections.
- When a form is submitted, the preview save menu includes HTML, PDF, and XML filters.
- QRP6's new web controls allow for customizable web viewers.
- The QRP6 server library now provides a QuickReport object that can execute reports from.DFM files and handles



去下载

标签

- VCL Components Delphi



产品数量
已有 42647个



付费会员
已有 1676位



价值评估
商业价值约 ¥6635.87万元



下载数量
已下载 222908次