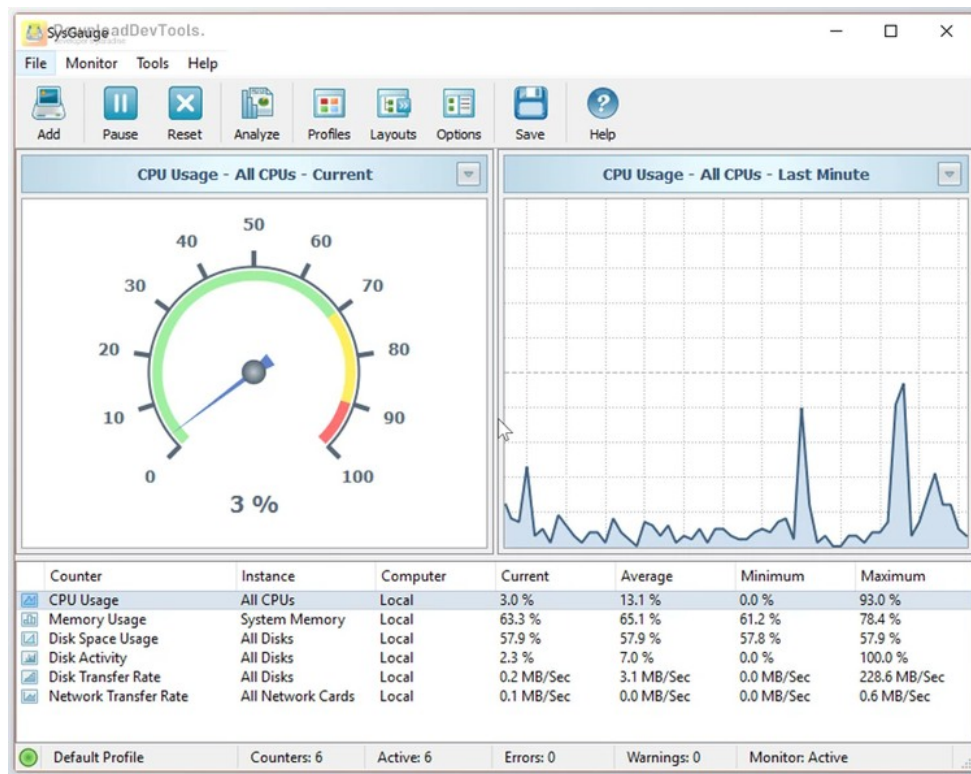
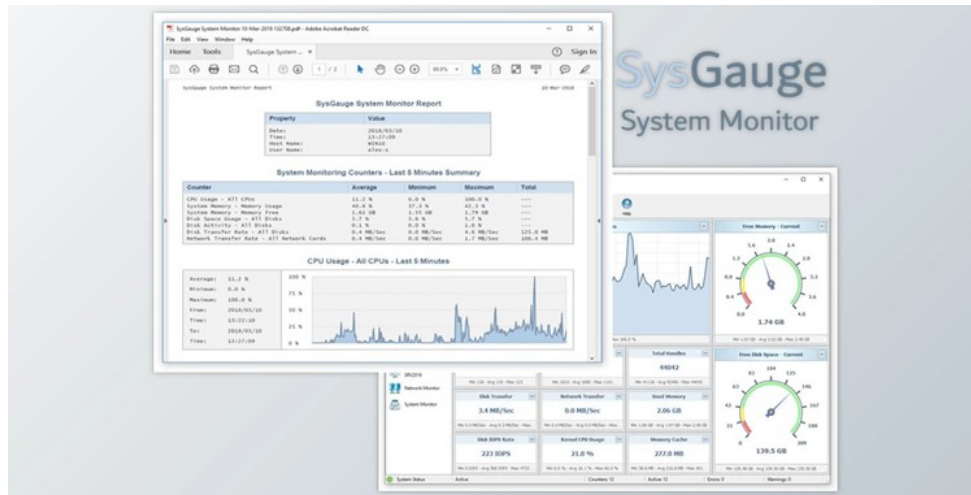


SysGauge Pro / Ultimate / Server v12.5.18 for win x86 & x64 + Activator

2026-03-04 13:37:34 label 我要反馈 下载页面

本站所有资源来源于网络，均不支持商用，仅供个人学习与研究。



SysGauge is an advanced system and performance monitoring utility designed for comprehensive monitoring of computer resources and operating system performance. A user-friendly GUI application offers a single, customizable module and dedicated modules for specific monitoring tasks such as system status, CPU, memory, processes, disk, NAS server, and network monitoring. The monitor selector enables easy management of monitoring GUI modules, allowing users to add, edit, and delete specific modules.

This customizable system monitor provides a wide range of performance and resource monitoring counters, enabling users to select and monitor specific counters based on their requirements. **SysGauge** supports monitoring local and remote computers, allowing users to connect to remote machines and monitor CPU usage, memory usage, network transfer rate, and disk activities. The utility stands out with its ability to save performance monitoring reports in various standard formats, including HTML, PDF, Excel, text, CSV, and XML.

In addition to the GUI application, **SysGauge** includes a command line utility for performing system monitoring operations through batch files and shell scripts. For advanced users and IT administrators, **SysGauge Server**, included in the Pro version, operates as a background service, allowing simultaneous monitoring of multiple operations. It allows displaying detached monitoring windows on different physical monitors, making it suitable for multi-monitor configurations and complex multi-server environments. ensures unattended monitoring with options to save reports or send email notifications based on specified limits for monitoring counters.



去下载

标签

Tools

Applications

Key Features of SysGauge Pro & Ultimate & Server:

1. **Comprehensive System Monitoring:** Monitor CPU usage, memory usage, network transfer rate, operating system performance, running processes, file system performance, USB performance, disk space usage, disk activities, and more.
2. **Customizable GUI Modules:** Utilize a single, customizable GUI module and dedicated modules for specific tasks such as system status, CPU monitoring, memory monitoring, process monitoring, disk monitoring, NAS server monitoring, and network monitoring.
3. **Remote Monitoring:** Connect to remote computers to monitor CPU, memory, network, and disk activities over the network. Specify remote computer names or IP addresses and choose system counters for monitoring.
4. **Performance Monitoring Counters:** Access a wide range of performance monitoring counters for in-depth analysis. Customize which counters to monitor and specify the display format and duration of performance monitoring results.
5. **Save Reports:** Save performance monitoring reports in various formats, including HTML, PDF, Excel, text, CSV, and XML. Reports include summary tables, counter statistics, line charts, and a complete history of monitoring results.
6. **Command Line Utility:** SysGauge includes a command line utility for performing system monitoring operations from batch files and shell scripts. Monitor local or remote servers, save reports, and manage monitoring profiles.
7. **SysGauge Server:** It provides SysGauge Server as a background service. It supports simultaneous monitoring of multiple operations, displaying detached monitoring windows on different monitors, and automated configuration and management using the command line utility.
8. **Unattended Monitoring:** SysGauge Server ensures unattended monitoring, allowing users to save reports or receive email notifications when monitoring counters surpass or fall below-specified limits.
9. **Multi-Monitor Support:** SysGauge Server provides the flexibility to display multiple detached monitoring windows on different physical monitors, making it suitable for multi-monitor configurations and complex multi-server environments.

资源列表

- download [SysGauge Pro & Ultimate & Server v11.2.18 for win x64 + Activator](#)
- download [SysGauge Pro & Ultimate & Server v11.5.38 for win x64 + Activator](#)
- download [SysGauge Pro & Ultimate & Server v11.6.12 for win x64 + Activator](#)
- download [SysGauge Pro & Ultimate & Server v11.7.26 for win x64 + Activator](#)
- download [SysGauge Pro & Ultimate & Server v11.8.12 for win x64 + Activator](#)
- download [SysGauge Pro & Ultimate & Server v11.9.18 for win x64 + Activator](#)
- download [SysGauge Pro & Ultimate & Server v12.0.16 for win x64 + Activator](#)
- download [SysGauge Pro & Ultimate & Server v12.1.18 for win x64 + Activator](#)
- download [SysGauge Pro & Ultimate & Server v12.1.18 for win x64 + Activator \(1\)](#)
- download [SysGauge Pro & Ultimate & Server v12.4.16 for win x64 + Activator](#)
- download [SysGauge Pro & Ultimate & Server v12.5.18 for win x64 + Activator](#)