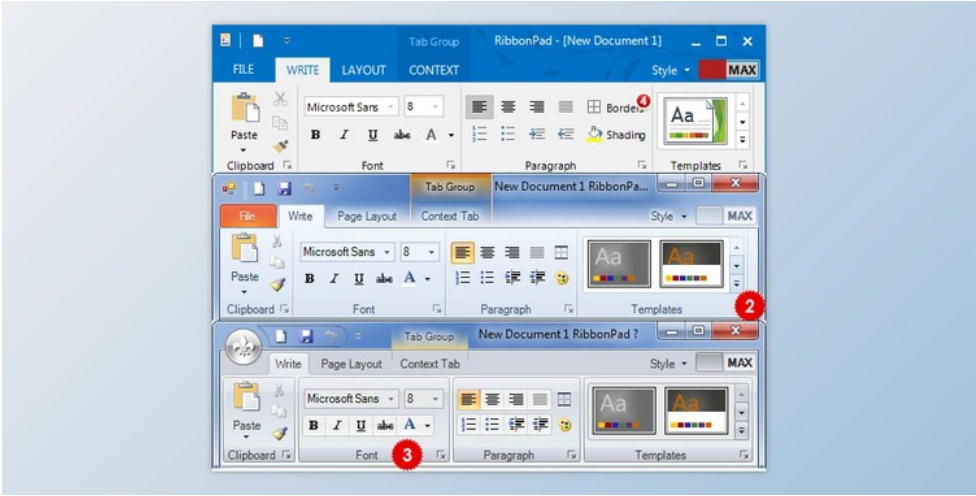


DevComponents DotNetBar for WinForms v14.1.0.37 with CRACK & v14.1.0.25 Retail with Source Code

2024-12-18 23:04:00 [label 我要反馈](#) [下载页面](#)



DotNetBar Suite for Windows Forms is a toolbox of **89 stunning** components for creating a **professional** user interface **with ease** using Visual Studio 2005 through 2015. For **over ten years**, DotNetBar is helping developers like you create sleek, professional Windows Forms (WinForms) user interfaces with unparalleled ease.

DotNetBar is the **world's first component** to introduce fully featured **Office 2013, Office 2010, Windows 7, and Office 2007 style Ribbon** controls. With DotNetBar, you always get the **latest advancements** in user interface technology in your applications before anyone else.

- World's first set of Metro User Interface controls with Metro Tiles, toolbars, slide panels, forms, completely automatic color scheme generation for unlimited color themes, and more. Make applications using the latest user interface style available today.
- Office 2013, Office 2010, Windows 7 and Office 2007 Ribbon Control with unlimited color schemes, Backstage Application Menu, Windows **Vista Glass** support, tab groups, hyper ribbon menus, multi-level KeyTips, complete Quick Access Toolbar (QAT) customization and full support for Ribbon Menu Tabs
- Office 2013 Ribbon Bar control with button groups, popups and more
- Office-style Super Tooltips control with 18 color styles
- Office-style SuperGrid powerful and extremely customizable super Data Grid control with nested grids, data-binding, master-detail support, filtering, data-grouping, and more.
- Advanced TreeView Control with Office styling, fantastic drag & drop support, multi-selection, and multi-column support, and more.
- Schedule/CCalendarcontrol Great looking Calendar scheduling control with multi-resource support, and powerful recurring appointments engine.
- Advanced Property Grid Control easy appearance customization, property name, and value mapping, Office styling, and more.
- TreeGX controls Present hierarchical data in a new, visually engaging way with TreeGX. You can visualize decision trees, hierarchies, create mind maps, or capture and organize ideas, everything within your application using TreeGX.
- CrumbBar Control bread-crumbspace-saving horizontal tree control.
- Micro-Charts item and control for super fast (renders over 2000 new charts/second) micro charts that can be added to toolbars, menus, and the Ribbon.
- Touch keyboard control with multi-touch support, custom layouts, and custom rendering.
- Knob/dial control Customizable knob control with several built-in visual styles.
- Gauge control with linear and circular gauges, full interactivity, multi-bar, and multi-gauge support, and more.
- **Hyper-Menus and Toolbars with Office 2007**, VS.NET 2005, Office 2003/XP/2000, **Office 2007 style popup Galleries**, mini-markup language, Windows XP Theme support, full-color customization, and much more...
- **Navigation Pane Control** Office 2007, 2003 style container control with collapse/expand functionality built-in.
- **SuperTabControl** 6 different styles, 16 per-tab color schemes, full-color customization, and much more.
- **Explorer Bar Control** World-class Windows XP style Explorer Bar control...
- **Tab-Strip Control**, with nine **different styles** including OneNote, Auto-MDI support for tabbed MDI applications, and full-color customization...
- SideBar Control that has won the respect of developers, with two layout types, five different styles, 18 predefined color schemes, drag & drop support, and much more.
- **BubbleBar control**, an elegant toolbar control with easy-to-click buttons that you **can't get anywhere else**. We released it first in June 2005.
- Stand-alone **Bar**. Create status bars, just like in Office 2007, toolbars, etc.



去下载

标签

Components

Winforms

.Net

- **Expandable Splitter Control** for intuitive management of screen real-estate.
- Expandable Panel control in Office 2010, 2007, 2003 style, with complete control over appearance.
- **Multi-functional Panel Control** a Who's Who of panel controls. Multiple functions unlimited possibilities.
- **Balloon/Alert Control** the absolute necessity to communicate important information to your end-users.
- **Wizard Control** fully-featured wholly customizable and flexible Wizard control with RTL support. Adheres to the Wizard97 specification.
- **ButtonX Control** stand-alone button control with a drop-down menu, Office 2007, Office 2003, VS.NET 2005, and custom color scheme control.
- **Color Picker** drop-down in Office 2010/2007 style that can be added to ribbon control, toolbars, menus, etc. Includes Custom color creation dialog.
- **Item Panel**, a super-flexible control with Office 2010/2007 style, drop-down support, and rich layout functionality.
- **Office 2010/2007 Style Forms** for consistent Office 2010 look and feel.
- **Office 2010/2007 Style checkbox** and radio button control.
- **Progress bar control** in Office 2010, 2007, Office 2003, and VS.NET 2005 like the style with a marquee and standard progress display abilities.
- **MessageBox drop-in replacement** in Office style for a consistent user interface look and feel.
- **Drop-in replacement for text box** in Office style with skinned scrollbars, watermark text support, and custom button embedded into the text box.
- ComboBoxEx is a **drop-in replacement for combo box** in Office 2013, 2010, 2007, and 2003 style, multi-column, and watermark text support.
- **GroupPanel replacement for group box** in Office 2007 style, skinned scrollbars, and text-markup support.
- **Office 2007 style Slider control** for a consistent user interface look and feel.
- **Office 2007 style Label control** with complete text-markup support and auto-sizing.
- Date/Time Picker, control in Office 2007 style with extensive customization options, null value support, custom formatting, and much more.
- Month-Calendar, control in Office 2007 style with comfortable custom rendering support, multi-selection, per-day image settings, and more.
- Second value input, control with custom value formatting, NULL value support, Office 2007 style, and more... Use it for currency entry, percentages, or any other decimal values.
- Integer value input, control with NULL value support, custom buttons, Office 2007 style, and more...
- **Reflection Image** Control provides great looking reflections for your images, supports disabled state and extensive background and border styling options.
- **Reflection Label** Control with text-markup, weakened state, and extensive background and border styling options.
- **Horizontal and Vertical Scrollbar** Controls with Office 2007 styling.
- **Advanced Masked Text Box** Controls with Office 2007 styling, drop-down support, and custom buttons.
- TextBoxDropDown control is a single line Office 2007 style text-box with drop-down support and custom buttons.
- ComboTree Control ComboBox with drop-down Tree control and Office 2007 style.
- Rating Control 5 Star rating control with average rating display support and text-markup.
- **WarningBox Control** a non-intrusive Office 2007 style warning panel control with text-markup support.
- IP Address Input Control Highly customizable formatted and free-text based IP Address Input control.
- SuperValidator Control Validate user input without writing any code.
- Highlighter Control Highlight any control, or just focused power, using a distinctive border.
- Commands Component Easy to use **Commanding model** that helps you separate the User Interface from Application logic. Make sure to check out the RibbonPad sample, which demonstrates how to use Commands.
- Switch Button control Great looking and fully customizable switch button.
- Task-Dialog component that can be used to display information and receive simple input from users. Our task-dialog works anywhere and supports our text-markup for textual headers and content.
- Circular Progress control with five visual styles and endless and minimum/maximum progress indicator types.
- Analog Editable Clock control with two visual styles, custom styling, and automatic and manual modes.
- Color Comb control for color selection from the color comb matrix.
- Color Blend control for color selection from blended colors matrix.
- Time selector control for easy time input and 12 and 24 hours time selection support. They are also used as part of our DateTimeInput control.
- **Office 2007 style ListViewEx control** drop-in replacement for ListView control requires no code changes. Not available for .NET Framework 1.0, 1.1.
- DataGridViewX, Drop-in replacement for **DataGridView** control in Office 2007 style including headers, rows, and scrollbars, and **11 new** column types including date-time and numeric editors.
- Calculator control provides a simple and visually pleasing calculator, which is also integrated into our SuperGrid and stand-alone numeric editors as a drop-down.
- Replacement for standard Binding Navigation control so you can have the same DotNetBar visual styles throughout your app.
- Direct RichTextBox replacement with styled scroll-bars to fit all DotNetBar visual styles.
- Toast Notifications component for non-intrusive application messages.
- Radial Menu control.
- Range Slider control.
- Layout control for resolution-independent data-entry forms and more.
- Progress Steps control to present the progress of the multi-step process.
- Advanced ListBox control.
- Token Editor control.
- Flyout control to create Outlook-style peeks popups.
- SideNav control to create "hamburger" menu apps and more.

- Desktop Alerts component to display alerts on any version of Windows XP and later.
- Charts control to create beautiful charts.
- TabFormControl creates tab-based user interfaces.



产品数量
已有 42647个



付费会员
已有 1676位



价值评估
商业价值约 ¥6635.87万元



下载数量
已下载 222908次