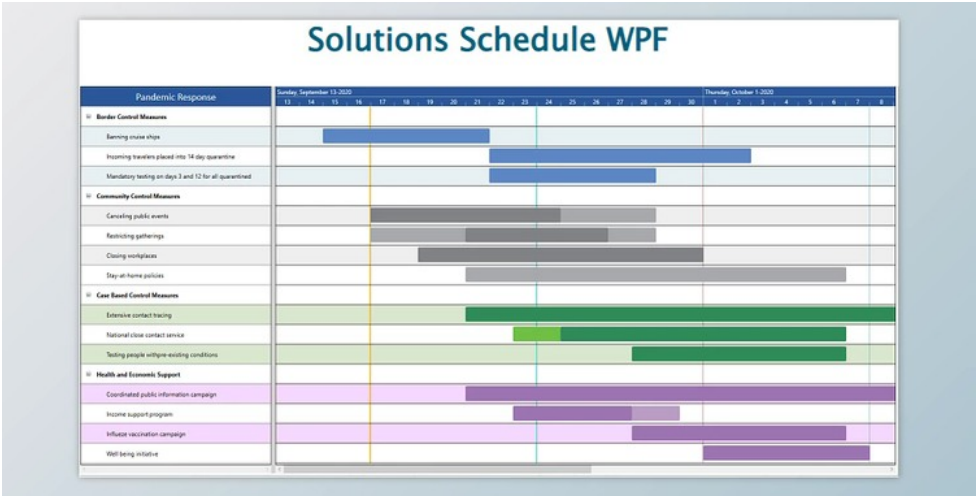


## DBi Tech Solutions Schedule for WPF v4.0.0.0 + Keygen

2024-12-18 23:04:15    label 我要反馈    下载页面



### Industry Proven and Time Tested

Solutions Schedule WPF is a comprehensive control for managing and presenting enterprise information in Gantt and Resource style presentations. Create fully functional Resource Gantt, Planning, and Scheduling solutions in minutes.

Welcome to Solutions Schedule WPF - the industry-tested developer's choice of snap-in Enterprise Resource Planning and Scheduling component software.

### Five primary elements comprise the Solutions Schedule:

- The Schedule Area, where time bars are created and interacted with and through which developers define the type of Gantt style end-user interaction, varying degrees of accuracy, and supporting information that can be surfaced.
  - The multi-column List View and Tree View area - where developers define either style of presentation - the direct edit List View or the Tree View and connect data for presenting and interacting with categorized lists of Resources.
  - The Ruler Area offers direct timeline customization for creating plans and schedules based on time types and timelines of Seconds and Minutes to Days, Weeks, Quarters, and Years. Significant and minor time interval settings accommodate great flexibility.
  - List Items, which originate in the List View / Tree View area and carry through the Scheduling Area for a contiguous representation of Resources and the tasks and roles assigned to them. Excel-style drag and drop of node items are supported.
  - The Time Bars, which reside within the Gantt Scheduling Area, complete DBi's unique Gantt Style, intuitively interactive, Drag and Drop planning and scheduling surface with User Drawn options.
- Each of the primary elements comprising the Solutions Schedule is managed dynamically by the architecture and business rules applied through the control construct.
- Further, via the Properties, Events, and Methods (PEMs), developers are provided discrete programmability and complete control of the control's presentation - including user (owner) drawn features built into the List / Tree View, Time Line Ruler, Time Bars, and Schedule area. User Drawn features are found in the Enterprise license.

### Schedule Object Details

- The Schedule Area offers developers and end-users an intuitive Gantt-style, drag-and-drop area for planning and scheduling multiple resources grouped and organized as required across various timelines and time-period presentations.
- When managing resources across domains and with varying timetables, there is a significant advantage offered by Solutions Schedule - being able to present multiple schedules, each with differing time scales and schedule period spans (days, weeks, etc.) - and all in one view that also allows dragging and dropping between the schedule objects for increased efficiency.
- Within the Schedule Area, several objects offer acceptable-grained interaction with schedule plans. For example:
- Notes – Notes are stationary visual objects in the schedule. Tooltips with information about the note are displayed when the mouse hovers over the Note icon. Notes can be used to draw attention to important aspects of a schedule.
  - Line arrows are images placed at the start or end of a schedule item notifying the end-user that other scheduled tasks are not



100% Virus FREE  
and Safe



去下载

标签

Components .Net WPF

within the viewable schedule area.

Guide Lines are vertical lines within the schedule area for representing a critical point in time and also to help align time bars accurately.

Current Time Line is a vertical line drawn in the schedule representing the current time of day. The Current Time Offset property can display the line in different time zones.

Dead zones set specific areas of the schedule where activities cannot be set - mouse actions are not allowed to create or move time bars into a dead zone.

Edit modes extend or restrict the CRUD aspects of Solutions Schedule WPF. There are seven specific edit modes: Edit, Erase, Select, Link, Unlink, Split, and Guideline, which can be presented via the Edit Modes Toolbar object.

We often encounter large scheduled presentations with thousands of Resources with an exponential number of Time bars planned over an extended period. In these situations, having the List Guide feature available to assist interaction within the Schedule Area is excellent, especially when the resource list/tree may not be in view.

#### Multi Column List / Tree View Object Details

Solutions Schedule .NET offers two operational modes for displaying Resources - a traditional multi-column List View as well as a Tree View:

In addition to the multi-column list and tree view options, many customization and intuitive end-user features allow for unique ERP, MRP, and other planning presentations, including:

In-Cell Editing:

Built-in edit box and combo box

Support for 3rd party edit controls

Standard edit modes: , , , and for navigation

Modify the Edit Controls default move and size settings

Direct access to text and combo boxes for:

- Addition of new navigation keys
- Overriding behavior of existing navigation keys
- Creating edit masks

#### List / Tree View Area Options

Drag and Drop Resource List Item within Parent Node

Change Line Item height by clicking and dragging

Change Column widths by clicking and dragging

Column Sorting built-in

Line Item Headers independent of columns

Click and dragline items within the parent group\*

Line Item subtext

Booleans – support for checkboxes in a column

Set Resource List Horizontal Scroll Bar Visible

#### List / Tree View Area - User-Drawn Features:

- Line Item – Override the default painting of a line item.
- Cells – Override the default painting of a single line item cell
- Column Headers – Override the default painting of a column header
- Title - Override the default painting of the list title
- Resource List UserDrawn Horizontal Scroll Bar

#### Time Line Ruler

The Schedule Ruler offers excellent flexibility for creating and managing activities, roles, appointments, etc., across any combination of time type and time value:

User Drawn Timeline Ruler Segments - *i.e., custom week presentation*

Time types include divisions of hours, days, weeks, months, and years.

Time Distance values allow for managing resources down to the second - an important aspect when scheduling robotics - and to years for planning conferences, equipment rentals, and production cycles having long durations.

The Time Distance property allows developers to create zoom-in and zoom-out capabilities for their scheduled presentations.

**Ruler Selection** – The start and end time of a selected time bar is highlighted in the timeline ruler, allowing for a more accurate alignment of resource time allocations.

## Time Bar Features

Time bars represent the events, assigned roles, and appointments attributed to each resource across the timeline in a schedule object.

Time bar functionality offered in Solutions Schedule is extensive, offering developers the ability to provide end-users the opportunity to consume a wealth of information in a single glance:

Regular text and sub-text – time bars support two text string display options

Text Into View – Make sure the data intended for display is always visible

Time Bar Dates – display the start/end days of the month within a time bar

## Duplicate time bars quickly with keyboard and mouse actions

Customize time bar presentations with:

- Set TimeBars Visible by Attribute
- Milestone markers
- Stock and custom-supplied images
- Percentage complete graphs in time bars

Set View - per Schedule Object, set the Schedule View

Overlap lines – extra thick lines drawn at the points where time bars overlap

Toggle Time Bars – place time bars behind or to the front

Alignment Lines – vertical lines appearing at either end of a time bar when a time bar is being created, moved, or sized, allowing for precision alignment

Links – Time bars can be linked with Gantt lines. Link time bars in any combination of Start to Start, Start to End, and End to End with standard, reciprocal, or direct link.

## Link Lines, Dash Patterns and Styles, User Drawn Link Lines

## DBi Tech Solutions Schedule for WPF Great Features:

- Set the number of Schedule Objects for One Instance of the Control
- Set individual Time Distance Values per Schedule Object
- Independently set Schedule Objects Visible
- Excel style Drag and Drop same Node Resource Items
- Selected Resource Item Highlight
- User Drawn Time Bars
- User Drawn Custom Schedule Areas
- Integrated ToolTip
- Watermark and User Drawn Watermarks
- Custom Areas, vertical offsets
- Reporting - built-in reporting, print preview, create an image, mark items as page breaks.
- Custom reporting using Solutions Schedule .NET print document object
- XML – write the contents of the control to an XML file and read it back at any time.
- Selected time bar collection
- Map Area – A visual representation of all active schedule objects placed along the top of the control for quick navigation
- Scroll to Date - a time-targeted method for programmatically navigating to specific points in a schedule.
- Hit test methods are provided, allowing the developer to determine where the mouse is at any point in the control.



产品数量  
已有 42647个



付费会员  
已有 1676位



价值评估  
商业价值约 ¥6635.87万元



已下载 222908次

