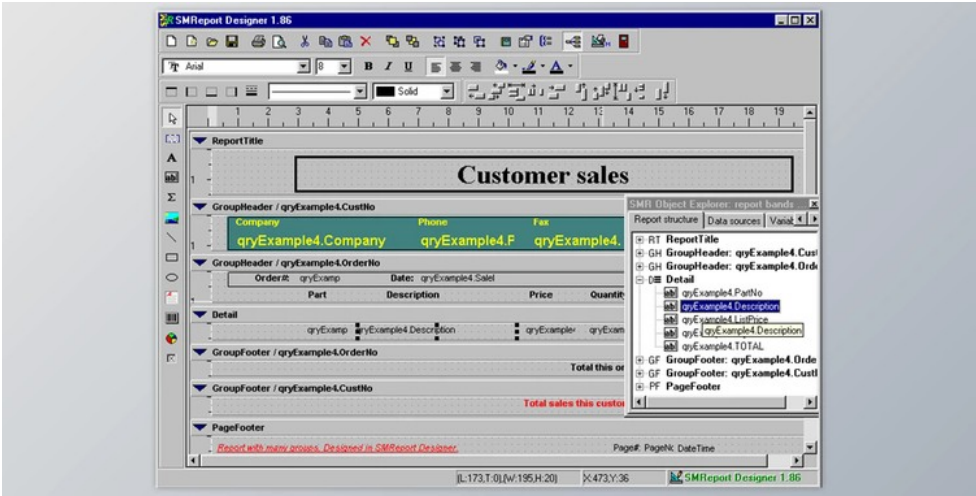




Scalabium SMReport Designer v1.96 for D10-D10.3 Rio + CRACK

2024-12-18 23:03:45 label 我要反馈 下载页面



SMReport is a set of native VCL components that do not need any external libraries.

By implementing SMReport inside your program, you and your end-users will immediately have available a potent tool for producing reports, labels, lists, forms, etc...

From the SMReport Explorer, you could observe your account's hierarchical arrangement (bands and controllers), the dataset arrangement with the subject list, and custom and system variables/parameters. Utilizing drag'n'shed you can quickly and readily re-order controls or make a new controller - only drop a desirable field or variable on your account band from the programmer. A brand new control will be automatically generated, and any essential information will be full of field/variable properties.

It is possible to use any information like the origin of your accounts. Developers have complete control over which variables, subjects, and other information are made accessible from the report designer. No external database links are required - you utilize the present result set since your report's origin.

Any TDataset-compatible element may be used together with our research engine, letting you report against BDE, ADO, dbExpress, DAO, Direct Oracle Access, DBISAM, IBX, Apollo, Advantage, Flash Filer, and much more.

The programmer and/or end-user can produce any mandatory record form:

- Report and Lists
You can produce any record with information group, calculations, shapes, pictures, graphs, barcodes, etc
- Labels
you'll be able to print product or address labels in a couple of seconds. Various kinds of the barcode are encouraged (postal, by way of instance), and images can be published - there are not any restrictions
- Types
you're able to produce and finish forms of any sort: tax forms, cheques, or other official records...
- Grids/Tables
you'll be able to make and publish a grid/table along with your own data. Vertical or horizontal grid lines are published.
- Master/Detail
it is possible to create reports with a Master/Detail relationship. An infinite data group is possible also.
- Menus/Covers
you'll be able to publish any restaurant's menu or CD cover using prolonged graphics, automatic eyeglasses, backgrounds/watermarks - the possibilities are limited only by your creativity.

You're able to freely design your account's design - dimensions, space, spaces, horizontal/vertical orientation, transparency, etc...

Wide reports may be designed, previewed, and printed using automatic sheet/bar production like MS Excel (with no extra programming or programming).

It is possible to use variables as the origin for text printing, management highlighting, group expressions. You can specify any complex formula or text description and utilize it throughout the whole project.

You can compute subtotals (per category, particular web page, or whole report) or utilize factors as the requirement for highlighting individual account places (by instance, publishing in virtually any debit card numbers in red).

It is possible to use operators, system factors, and custom factors in almost any mix in any expression.



去下载

标签

- Delphi
- Components
- VCL

Any intricate customized formulation can be stored as an individual variable and used in any portion of your document.

The Expression Builder gives a user-friendly method of quickly and easily creating complex expressions.

Over 50 predefined functions are supplied in 6 classes. Short descriptions and parameter lists are offered for every single purpose.

Any custom variable you produce can be offered with a brief description and hint.

You may produce any number of information group degrees and specify any custom requirement for the screen and processing of almost any group.

Each group header and footer could include printable controls that could be reprinted on every new page.

Group conditions may use any expression constructed from the listing of available custom or system purposes.

While designing reports, the programmer or end-user may use the effective built-in Object Inspector to get any management properties.

Any intricate possessions (with sub-properties) can be found at any given level.

Custom editors enable simple editing of any house worth (color selector, image editor, memo editor, font editor)

The SMReport Visual Report Designer supports the display of record rings as a shrub in which you can fail (hide) or expand (show) any group from the report.

Scalabium SMReport Designer Excellent Attributes:

- Friendly port
- run-time designer
- Drag'n'drop performance
- Customized trailer conversation with zooming and magnifier capacity
- report wizards
- Broad report designing
- Conditional highlighting of fields and variables
- Unlimited data group
- Factors can be computed on-the-fly (sum/count/average etc.)
- User factors for custom formulations
- Stretching attribute
- Limitations for end-users activity (disable/enable the management change)
- Reports may be exported in several Distinct formats such as HTML, XML, PDF, CSV, Text, MS Excel, RTF, TIFF/bitmap/metafile, and much more
- Exposed interfaces into the report engine permit developers to include fresh printable controllers (flow charts, by Way of Example) and export filters
- multilingual interface



产品数量
已有 42647个



付费会员
已有 1676位



价值评估
商业价值约 ¥6635.87万元



下载数量
已下载 222908次