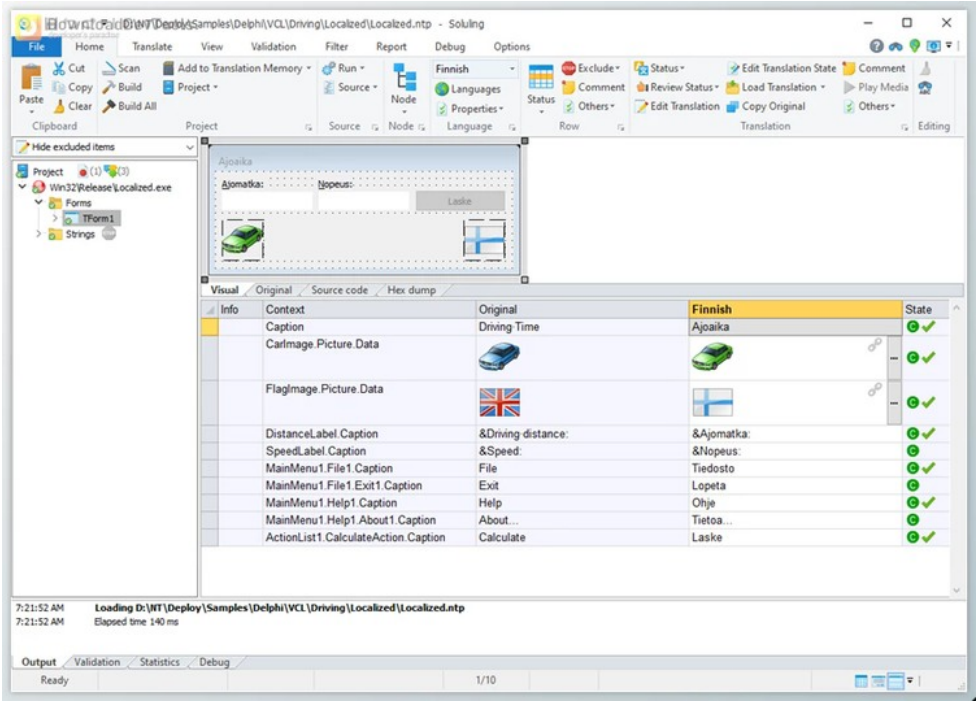




## Soluling Enterprise Edition v1.0.1080 + CRACK

2025-12-09 09:30:03    [label 我要反馈](#)    [下载页面](#)



The **Soluling Enterprise Edition** helps you develop, manage, and keep multilingual content throughout your workflow. The tool works naturally with your development workflow in continuous localization and waterfall models. Soluling examines your project documents on your local system to protect coding information during collaboration between development and translation teams. It handles many file types, including simple resources and entire project files, so teams of all sizes can use it effectively.

helps you localize every element of your application, including strings, layouts, and visual assets, as you view live translations of your UI. The tool increases productivity with connections to Google, DeepL, and Microsoft translation services while providing translation memory and terminology support with live error detection. You can run efficient processes and conveniently handle localization updates through automation tools on the command line.

The enterprise edition provides multiple capabilities to meet business requirements, including automation of build processes and enhanced resource and grammar management. Through **Soluling Enterprise Edition**, your translations stay precise whether you work on desktops, webpages, mobile apps, or different content types. Our quality support team provides guidance, offers hundreds of reference materials, and delivers tools to help you transition from your existing localization platform with minimal effort.

### Key Features of Soluling Enterprise Edition :

- Local Scanning:** Securely scan files directly on your local machine without sharing source code.
- Versatile Localization:** Localize strings, layouts, images, colors, and more across platforms.
- Wide Format Support:** Supports over 100 file formats, including ResX, JSON, XAML, and Markdown.
- Real-Time Visual Editors:** Preview localized user interfaces instantly for accuracy.



去下载

标签

- [Tools](#)
- [Applications](#)

- 5. **Machine Translation Integration:** Use services like Google, DeepL, and Microsoft for faster translations.
- 6. **Translation Memory:** Reuse existing translations with fuzzy matching for consistency.
- 7. **Terminology Support:** Highlight and quickly translate terms from your termbase.
- 8. **Error Detection:** Automatically detect and correct translation errors in real time or batches.
- 9. **Build Automation:** Generate and inject resource files directly into your builds.
- 10. **Continuous Localization:** Easily update translations for ongoing projects.
- 11. **Internationalization API:** Extend native APIs for advanced localization needs.
- 12. **Migration Tools:** Import existing translations and transition from other tools effortlessly.
- 13. **Comprehensive Support:** Benefit from extensive documentation, examples, and customer assistance.

资源列表

- download Soluling Enterprise Edition v1.0.1057
- download Soluling Enterprise Edition v1.0.1060 + CRACK
- download Soluling Enterprise Edition v1.0.1063 + CRACK
- download Soluling Enterprise Edition v1.0.1064 + CRACK
- download Soluling Enterprise Edition v1.0.1065 + CRACK
- download Soluling Enterprise Edition v1.0.1066 + CRACK
- download Soluling Enterprise Edition v1.0.1080 + CRACK



产品数量  
已有 42647个



付费会员  
已有 1676位



价值评估  
商业价值约 ¥6635.87万元



下载数量  
已下载 222908次