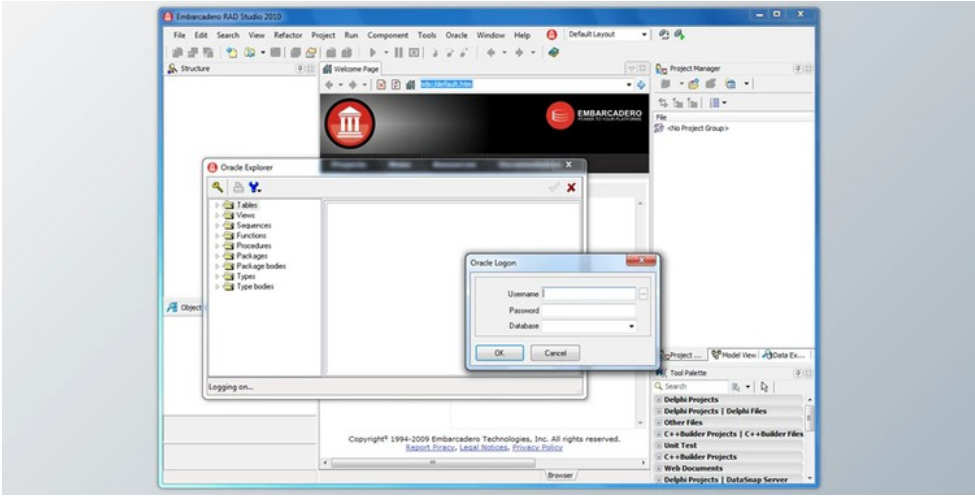




Allround Automations Direct Oracle Access v4.1.4.1 for Delphi & CB 3-11 Alexandria Retail + License Key

2024-12-18 23:03:30 [label 我要反馈](#) [下载页面](#)



Direct Oracle Access can enable you to earn a smooth integration between Delphi and C++Builder development environments and Oracle database programs. With the Direct Oracle Access component set for Delphi or C++Builder, you can access any Oracle database directly, skipping the BDE. These simple-to-use components allow you to utilize most of the Oracle-specific features, eliminating the BDE distribution and configuration problems.

If you're utilizing Embarcadero Delphi or even C++Builder to develop Oracle applications, then the Direct Oracle Access component set can enable you to earn a smooth integration between this excellent development tool and database system. Not only will your application take maximum advantage of the products, but your application development process may also benefit from the following key attributes:

Direct Oracle Access Great Features:

Both online batch and transaction processing software may benefit from Oracle's functionality attributes. Direct Oracle Access, as the name suggests, right accesses the Oracle Interface. This ensures optimum performance for conventional database access functions. Support for Array Fetching, Array DML, PL/SQL Blocks, PL/SQL Tables, Local Statement Caching, along with the Direct Path Load Engine, Allow You to maximize your program's performance-critical functions much more.

A Direct Oracle Access program doesn't want middleware such as the BDE or ODBC; it only requires Oracle SQL*Net or Net8. Consequently, it is possible to set up your application without many version dependence or configuration issues typically involved in middleware setup.

Many PL/SQL code from Oracle databases is programmed in bundles. Direct Oracle Access provides a TOraclePackage part that lets you easily predict packed program units without comprehensive declarations of those program units along with their parameters.

Furthermore, Direct Oracle Access comprises a Bundle Wizard that may create classes to encapsulate the application components and document types defined in packages. This will make your Oracle packs a pure extension of this Object Pascal or even C++ language.

The dataset element in Direct Oracle Access supports Oracle record locking, document refreshing, the server created values, automated arrangement value creation, and BLOB compression. You can set up master/detail relations if a foreign secret is different between the master and detail table or in the event the master table includes one or more set columns or characteristics (nested table or variety).

The TOracleDataSet may use a lot of the info in the Oracle Dictionary at run time. You may check server Limits on the customer, and You may read restriction error messages from a message table. The dictionary may also read format masks, array values, and default values. This permits you to create software with a minimal amount of database understanding' compiled to the executable file, dynamically adopting modifications in the database before recompiling it.

The TOracleDataSet part has a Query By Example mode that allows you to supply QBE Forms on your program with no extra programming and no additional controls or components. The consequent QBE queries are done on the Oracle Server so that functionality will be optimal and network traffic will be minimal. The user can provide simple query values like JONES or even 100, may include wildcard characters for string values like JON percent, and may incorporate comparison operators like >, <, NOT, BETWEEN, IN, and so forth.

To track the database access tasks of your Direct Oracle Access program, you may use the Oracle Monitor utility. It exhibits the SQL, factors, timestamp, elapsed time, network data, database data, and query implementation plan of every task. This



去下载

标签

- [VCL](#)
- [Components](#)
- [Delphi](#)

is sometimes valuable to find performance bottlenecks for tuning purposes and also to resolve application mistakes.

The Oracle Server involves a dbms_alert and dbms_pipe bundle for event processing. The TOracleEvent in Direct Oracle Access may be a receiver for all these occasions. It works in a background thread of your program and may disperse database occasions into familiar object occasions. These events may occur synchronously or asynchronously using the main thread of the program.

Should you need to execute a lot of data definition language (DDL) statements, such as carrying out the database setup component of your program, you may use the TOracleScript component. It's a property editor which lets you create the script along with the respective commands. The extendible script language follows the simple SQL*Plus syntax and supports most SQL statements. Additionally, it supports substitution factors to produce your scripts customizable.

To make the most of this Advanced Queuing choice of Oracle8, it's possible to use this TOracleQueue component. The TOracleQueue component encapsulates the basic performance of this DBMS_AQ bundle. It gives a handy method to enqueue messages into a queue or dequeue messages from a queue. Messages may be dequeued in a background thread of your program, along with the events which are created in threaded mode may occur synchronously or asynchronously using the main thread of your program.

In server programs that often should make sessions to process requests from client programs, it could be handy to use connection pooling. With no pooling concept, every petition could cause an actual database logon and logoff. By employing this TOracleSessionPool part, you can keep a pool of database sessions used and reused for various orders. It's possible to specify the minimum, the maximum number of sessions at the swimming pool, specify the TimeOut behavior for idle sessions at the swimming pool, and preset the username, password, and database.

Direct Oracle Access supports many Oracle-specific features. Aside from Mentioned Previously, it supports Oracle8 and Oracle8i features like LOB Locators, Objects & References, XMLTYPE, Timestamps, Scrollable Queries, Password Expiration, External Procedure development, along with also the Oracle Services for MTS.



产品数量
已有 42647个



付费会员
已有 1676位



价值评估
商业价值约 ￥6635.87万元



下载数量
已下载 222908次